

EXPLORE

cameras

ระบบกล้องฯ วงจรปิด

- ในพื้นที่เสี่ยงต่อการระเบิด (Explosion Proof cameras)
- พื้นที่สารระเหยกัดกร่อนรุนแรง (Hazardous area)
- พื้นที่ติดทะเล (Marine cameras)

Product line card

www.sigura.com



SYSTRONICS CO.,LTD.

Authorized Distributor SYSTRONICS Co.,Ltd.

ตัวแทนจำหน่ายในประเทศไทย บริษัท ซิสตรอนิกส์ จำกัด



Marine, oil and gas security in hazardous areas

Watching over public safety, keeping an eye on vital processes, spotting a problem before it escalates. These are just a few of the things a reliable video surveillance system lets you do. But in the marine, oil and gas (MOG) industry, 'reliable' also means being absolutely sure that the equipment you use won't cause trouble, no matter how extreme the environment.

Hazardous areas

A hazardous area is a location where concentrations of flammable gases and/or vapours occur. In environments like these, a single spark could cause a fire or even an explosion. To safeguard these areas, you need surveillance equipment you can rely on.

Security products used in hazardous areas and surrounding locations have to meet certain standards in terms of quality, reliability and service life. Ideally, they have a low cost of ownership while keeping the downtime of your installation close to zero. But how to achieve that perfect mix? And how do you know if something that is labelled as smart technology really helps you make smart decisions? Siquira offers the answers to all these questions.

Situational awareness

Siquira creates situational awareness through a careful selection of data streams. Only information that is relevant to a particular situation makes it to your surveillance screen, the rest is omitted. The result: a greatly enhanced workflow. This is particularly important in the MOG industry, where poor decisions can have tremendous consequences. Having the right information at the right time puts you in a perfect position to take the right decisions.

Siquira offers a complete solution for the surveillance of your MOG location, from cameras suitable for use in hazardous areas to advanced control room software. All components are designed to work together and increase situational awareness, resulting in a clear, efficient overview of the safety situation of your installation.

Migration to IP

Modernising your surveillance system doesn't mean you have to replace your entire infrastructure. Siquira provides a straightforward step-by-step migration path that instantly allows you to enjoy the benefits of the digital age. Even with your analogue cameras, and even with your existing coaxial cable. All it takes is a few clever network adjustments.

Want to find out more? Ask for our free Migration to IP brochure.



Would you like to increase your safety with our MOG solutions? Here is how it works.



Authorized Distributor **SYSTRONICS Co., Ltd.**
ตัวแทนจำหน่ายในประเทศไทย บริษัท ซีสตรอนิกส์ จำกัด
Bangkok Office : 0-2879-1127 to 9
Rayong Office : 0-3869-4145 to 8
E-mail : info@systronics.co.th

Siquira is part of TKH Security Solutions, a division of the TKH Group. TKH Security Solutions offers a wide range of systems for access control, surveillance, intrusion detection and video management. Siquira ExPLORE is a brand of Siquira.



Project Reference

siqurity in hazardous areas



บริษัท บางจากปิโตรเลียม จำกัด (มหาชน)

โรงกลั่นน้ำมันบางจาก ได้ไว้วางใจ เลือกใช้สินค้าจาก SIQURA มูลค่ารวมทั้งโครงการกว่า 50 ล้านบาท เพื่อติดตั้งระบบรักษาความปลอดภัย, เพื่ารวังและ ใช้ในขั้นตอนการกลั่นน้ำมันอีกด้วย อุปกรณ์ทุกชนิดต้องเป็นแบบป้องกันการระเบิด (Explosion Proof) และต้องทนต่อการกัดกร่อนของไอระเหยจากน้ำมันอีกด้วย



การไฟฟ้าฝ่ายผลิตแห่งประเทศไทย เขื่อนแม่เมาะ:

การไฟฟ้าฝ่ายผลิตแห่งประเทศไทย เขื่อนแม่เมาะ: จังหวัดลำปาง เลือกใช้สินค้า SIQURA ในพื้นที่เหมืองแร่ ที่มีปริมาณฝุ่นและความร้อนสูง และติดตั้งอุปกรณ์บนรถขุดและลำเลียงแร่ ที่มีการสัมผัสต่อเนื่องตลอดเวลา โดยผ่านมาแล้วเป็นเวลา 5 ปี อุปกรณ์ SIQURA ยังใช้งานได้อย่างมีประสิทธิภาพ



บริษัท ไออาร์พีซี จำกัด (มหาชน)

บริษัท ไออาร์พีซี จำกัด (มหาชน) หรือโรงกลั่นไออาร์พีซี เลือกใช้สินค้าอุปกรณ์ลิวิตซ์จาก SIQURA เพื่อติดตั้งร่วมกับระบบรักษาความปลอดภัย โดยอุปกรณ์ทุกชนิดต้องเป็นแบบป้องกันการระเบิด (Explosion Proof) จะต้องทนต่อการกัดกร่อนของไอระเหยจากน้ำมัน และสำหรับจุดที่ติดตั้งบริเวณท่าเรือซึ่งติดกับทะเล จะต้องทนทานต่อการกัดกร่อนของไอระเหยทะเลอีกด้วย

ExPLORE cameras siquring your world



	Analogue			IP		
Model	SA-A36 F	SA-A36 P	SA-A36 T	SA820 F	SA820 P	SA820 T
Certifications	-	-	-	-	-	-
Area classification	-	-	-	-	-	-
Body material	316 L stainless steel, electro-polished	316 L stainless steel, electro-polished	316 L stainless steel, electro-polished	316 L stainless steel, electro-polished	316 L stainless steel, electro-polished	316 L stainless steel, electro-polished
Image sensor	¼" EXview HAD CCD	¼" EXview HAD CCD	¼" EXview HAD CCD	1/2.7" CMOS	1/2.7" CMOS	1/2.7" CMOS
Lens	Motorised 36x optical zoom 3,4 - 122,4 mm, F1.6	Motorised 36x optical zoom 3,4 - 122,4 mm, F1.6	Motorised 36x optical zoom 3,4 - 122,4 mm, F1.6	Motorised 18x optical zoom 4,7 - 84,6 mm, F1.6	Motorised 18x optical zoom 4,7 - 84,6 mm, F1.6	Motorised 18x optical zoom 4,7 - 84,6 mm, F1.6
Rotation	-	Continuous rotation	Continuous rotation	-	Continuous rotation	Continuous rotation
Tilt range	-	-90° to +90°	-90° to +90°	-	-90° to +90°	-90° to +90° -10°
Positional accuracy	-	+/- 0.1°	+/- 0.1°	-	+/- 0.1°	+/- 0.1°
Ingress protection rating	IP67	IP67	IP67	IP67	IP67	IP67
Impact resistance	BS EN 60079-0	BS EN 60079-0	BS EN 60079-0	BS EN 60079-0	BS EN 60079-0	BS EN 60079-0
Vibration resistance	EIC 6800-2-6	EIC 6800-2-6	EIC 6800-2-6	EIC 6800-2-6	EIC 6800-2-6	EIC 6800-2-6
Horizontal field of view	57.8° - 1.7°	57.8° - 1.7°	57.8° - 1.7°	61.5° - 3.3°	61.5° - 3.3°	61.5° - 3.3°
Light sensitivity (30 IRE)	0.7 lx colour 0.07 lx B/W	0.7 lx colour 0.07 lx B/W	0.7 lx colour 0.07 lx B/W	0.2 lx colour 0.02 lx B/W	0.2 lx colour 0.02 lx B/W	0.2 lx colour 0.02 lx B/W
Signal to noise ratio	>50 dB	>50 dB	>50 dB	-	-	-
Max. resolution	540 TVL	540 TVL	540 TVL	1920 x 1080 @30 fps	1920 x 1080 @30 fps	1920 x 1080 @30 fps
Day/night (ICR)	✓	✓	✓	✓	✓	✓
IR illuminator	-	-	100 m at 12° (328 ft)	-	-	100 m at 12° (328 ft)
Power	24 Vac	24 Vac	24 Vac	24 Vac	24 Vac	24 Vac
Min. power consumption	53 W*	118 W**	143 W***	53 W*	118 W**	143 W***
Operating temperature	-40 °C to +60 °C (-40 °F to +140 °F)	-40 °C to +60 °C (-40 °F to +140 °F)	-40 °C to +60 °C (-40 °F to +140 °F)	-40 °C to +60 °C (-40 °F to +140 °F)	-40 °C to +60 °C (-40 °F to +140 °F)	-40 °C to +60 °C (-40 °F to +140 °F)
Sun shield	✓	✓	✓	✓	✓	✓
Wiper	✓	✓	✓	✓	✓	✓
Internal demister	✓	✓	✓	✓	✓	✓
Washer system	Optional	Optional	Optional	Optional	Optional	Optional
Mounting options	Wall, pole top, pole side	Wall, pole top	Wall, pole top	Wall, pole top, pole side	Wall, pole top	Wall, pole top
Weight	12 kg (26.5 lbs)	27 kg (59.5 lbs)	42 kg (92.6 lbs)	12 kg (26.5 lbs)	27 kg (59.5 lbs)	42 kg (92.6 lbs)
Dimensions	430 x 170 x 159 mm (16.9 x 6.7 x 6.3")	430 x 480 x 489 mm (16.9 x 18.9 x 19.3")	430 x 733 x 489 mm (16.9 x 28.9 x 19.3")	430 x 170 x 159 mm (16.9 x 6.7 x 6.3")	430 x 480 x 489 mm (16.9 x 18.9 x 19.3")	430 x 733 x 489 mm (16.9 x 28.9 x 19.3")

* 25 W for -20 °C to +60 °C (-4 °F to +140 °F)

** 60 W for -20 °C to +60 °C (-4 °F to +140 °F)

*** 85 W for -20 °C to +60 °C (-4 °F to +140 °F)

**** Certified operating temperature: -20 °C to +60 °C (-4 °F to +140 °F)

Bringing uncomplicated clarity to harsh environments

For its newly developed gas field in Mehar, Pakistan, OMV needed an all-IP surveillance system able to cope with the region's hot summers and cold winters. Siquira decided to implement a mix of its BC620WDR-SFP, HSD626 and HSD820H2-E cameras. Surveillance images now shoot across a fiber-optic Ethernet network based on Siquira's managed SFP switches, while operators have the entire system at their fingertips with DIVA, Siquira's advanced video management solution.

Other product groups



Video over fiber



Video encoders



Network equipment



Cameras



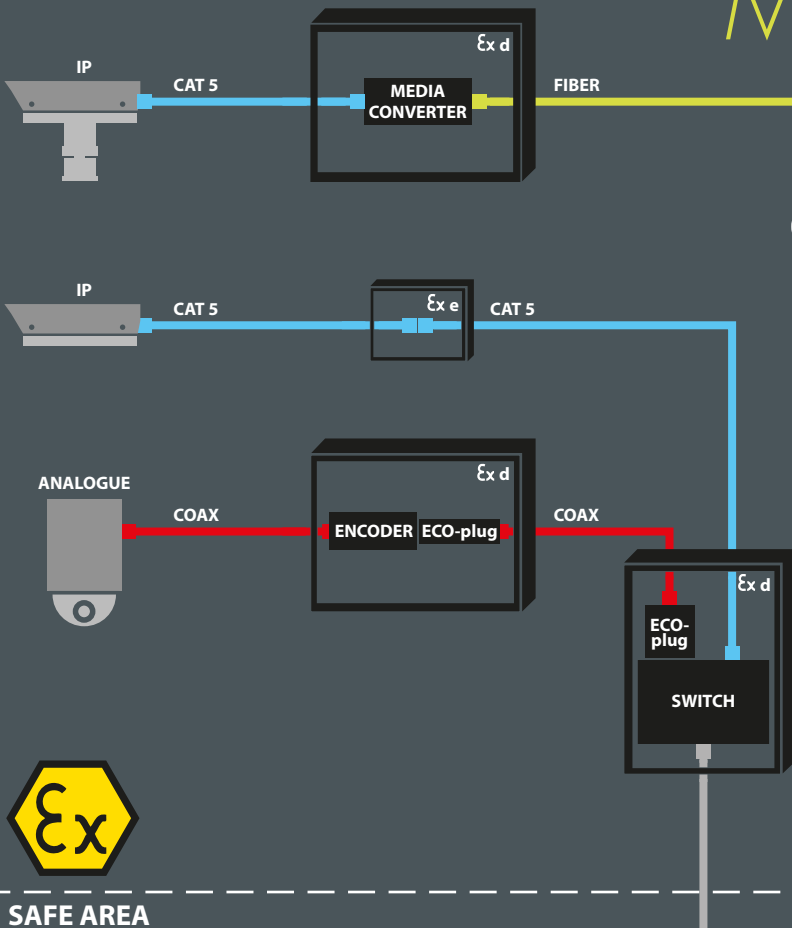
Video management



Analogue				IP			
EX-A36 F	EX-A36 P	EX-A36 T	HD18EXP	EX820 F	EX820 P	EX820 T	HSD626EXP
ATEX, UL, IECEx, CCOE, INMETRO, CSA, CNEX, GOST-R	ATEX, UL, IECEx, CCOE, INMETRO, CSA, CNEX, GOST-R	ATEX, UL, IECEx, CCOE, INMETRO, CSA, CNEX, GOST-R	ATEX	ATEX, UL, IECEx, CCOE, INMETRO, CSA, CNEX, GOST-R	ATEX, UL, IECEx, CCOE, INMETRO, CSA, CNEX, GOST-R	ATEX, UL, IECEx, CCOE, INMETRO, CSA, CNEX, GOST-R	ATEX
Zone 1, 2, 21, 22 (ATEX, IECEx, INMETRO); Class 1, Zone 1 (UL, CSA)	Zone 1, 2, 21, 22 (ATEX, IECEx, INMETRO); Class 1, Zone 1 (UL, CSA)	Zone 1, 2, 21, 22 (ATEX, IECEx, INMETRO); Class 1, Zone 1 (UL, CSA)	Zone 1, 2, 21, 22 (ATEX)	Zone 1, 2, 21, 22 (ATEX, IECEx, INMETRO); Class 1, Zone 1 (UL, CSA)	Zone 1, 2, 21, 22 (ATEX, IECEx, INMETRO); Class 1, Zone 1 (UL, CSA)	Zone 1, 2, 21, 22 (ATEX, IECEx, INMETRO); Class 1, Zone 1 (UL, CSA)	Zone 1, 2, 21, 22 (ATEX)
316 L stainless steel, electro-polished	316 L stainless steel, electro-polished	316 L stainless steel, electro-polished	316 stainless steel, electro-polished	316 L stainless steel, electro-polished	316 L stainless steel, electro-polished	316 L stainless steel, electro-polished	316 stainless steel, electro-polished
¼" EXview HAD CCD	¼" EXview HAD CCD	¼" EXview HAD CCD	¼" EXview HAD CCD	1/2.7" CMOS	1/2.7" CMOS	1/2.7" CMOS	¼" EXview CCD
Motorised 36x optical zoom 3,4 - 122,4 mm, F1.6	Motorised 36x optical zoom 3,4 - 122,4 mm, F1.6	Motorised 36x optical zoom 3,4 - 122,4 mm, F1.6	Motorised 36x optical zoom 3,4 - 122,4 mm, F1.6	Motorised 18x optical zoom 4,7 - 84,6 mm, F1.6	Motorised 18x optical zoom 4,7 - 84,6 mm, F1.6	Motorised 18x optical zoom 4,7 - 84,6 mm, F1.6	Motorised 35x optical zoom 3,4 - 119,0 mm, F1.6
-	Continuous rotation	Continuous rotation	Continuous rotation	-	Continuous rotation	Continuous rotation	-
-	-90° to +90°	-90° to +90°	-10° to +190°	-	-90° to +90°	-90° to +90°	-10° to +190°
-	+/- 0.1°	+/- 0.1°	+/- 0.1°	-	+/- 0.1°	+/- 0.1°	+/- 0.1°
IP67	IP67	IP67	IP67	IP67	IP67	IP67	IP67
BS EN 60079-0	BS EN 60079-0	BS EN 60079-0	-	BS EN 60079-0	BS EN 60079-0	BS EN 60079-0	-
EIC 6800-2-6	EIC 6800-2-6	EIC 6800-2-6	-	EIC 6800-2-6	EIC 6800-2-6	EIC 6800-2-6	-
57.8° - 1.7°	57.8° - 1.7°	57.8° - 1.7°	55.8° - 1.55°	61.5° - 3.3°	61.5° - 3.3°	61.5° - 3.3°	55.8° - 1.7°
0.7 lx colour 0.07 lx B/W	0.7 lx colour 0.07 lx B/W	0.7 lx colour 0.07 lx B/W	0.1 lx colour 0.01 lx B/W	0.2 lx colour 0.02 lx B/W	0.2 lx colour 0.02 lx B/W	0.2 lx colour 0.02 lx B/W	0.1 lx colour 0.01 lx B/W
>50 dB	>50 dB	>50 dB	>50 dB	-	-	-	>50 dB
540 TVL	540 TVL	540 TVL	650 TVL	1920 x 1080 @30 fps	1920 x 1080 @30 fps	1920 x 1080 @30 fps	720 x 480 @30 fps
✓	✓	✓	✓	✓	✓	✓	✓
-	-	100 m at 12° (328 ft)	-	-	-	100 m at 12° (328 ft)	-
24 Vac	24 Vac	24 Vac	24 Vac	24 Vac	24 Vac	24 Vac	24 Vac
53 W*	118 W**	143 W***	45 W	53 W*	118 W**	143 W***	45 W
-40 °C to +60 °C (-40 °F to +140 °F)	-40 °C to +60 °C (-40 °F to +140 °F)	-40 °C to +60 °C (-40 °F to +140 °F)	-45 °C to +50 °C (-49 °F to +122 °F)****	-40 °C to +60 °C (-40 °F to +140 °F)	-40 °C to +60 °C (-40 °F to +140 °F)	-40 °C to +60 °C (-40 °F to +140 °F)	-45 °C to +50 °C (-49 °F to +122 °F)****
✓	✓	✓	-	✓	✓	✓	-
✓	✓	✓	-	✓	✓	✓	-
✓	✓	✓	-	✓	✓	✓	-
Optional	Optional	Optional	-	Optional	Optional	Optional	-
Wall, pole top, pole side	Wall, pole top	Wall, pole top	Wall, ceiling, pole side	Wall, pole top, pole side	Wall, pole top	Wall, pole top	Wall, ceiling, pole side
25 kg (55.1 lbs)	53 kg (116.8 lbs)	62 kg (136.7 lbs)	14 kg (30.9 lbs)	25 kg (55.1 lbs)	53 kg (116.8 lbs)	62 kg (136.7 lbs)	15 kg (33.1 lbs)
530 x 176 x164 mm (20.9 x 6.9 x 6.5")	530 x 512 x 475 mm (20.9 x 20.2 x 18.7")	530 x 733 x 489 mm (20.9 x 28.9 x 19.3")	ø 195 x 373 mm (ø 7.7 x 14.7")	530 x 176 x164 mm (20.9 x 6.9 x 6.5")	530 x 512 x 475 mm (20.9 x 20.2 x 18.7")	530 x 733 x 489 mm (20.9 x 28.9 x 19.3")	ø 195 x 373 mm (ø 7.7 x 14.7")

HAZARDOUS AREA

Marine, oil and gas :



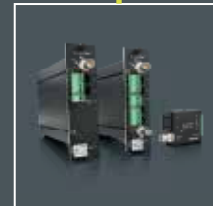
Explosion-proof cameras

Analogue or digital? With or without infrared lighting? Fixed camera station, PTZ camera station or PTZ dome? Siqura's explosion-proof cameras and camera stations come in all shapes and sizes. And with our various easy-to-use mounting brackets, they can be installed virtually anywhere.

Siqura's explosion-proof cameras are made for harsh environments. The housing of these cameras, which have an IP67 ingress protection rating, is constructed of 316L electro-polished stainless steel. That means they are able to withstand corrosion in offshore installations. Our models can be provided with different certifications to meet different requirements worldwide, such as ATEX, UL and IECEx.

Surveillance cameras

For extra surveillance power, Siqura offers a range of IP cameras that deliver full HD video with a large depth of field and a wide dynamic range (WDR), resulting in excellent image quality no matter how poor the light. Our cameras are very easy to install. Simply mount them to a wall, ceiling or pole, configure them through the web interface and you are ready to start streaming over your current UTP, fiber or coax infrastructure.



Video over fiber

While IP and Ethernet technologies rule the world of video networking, existing fiber and analogue systems remain widely used. Many CCTV operators are rightfully reluctant to replace their equipment with brand-new systems. Our hybrid solutions, in which video-over-IP and fiber transmission components sit side by side in the same 19" system rack, help you transform your analogue systems into cutting-edge IP networks at a rate that suits you best. The Siqura media converter line gives you the freedom to choose the infrastructure you want for your installation.

Siqura's fiber transmission products are environmentally hardened and designed to withstand extreme temperatures. With their compact design and carefully selected combination of video, audio and data channels, they form a full range of easy-to-install point-to-point fiber-optic video surveillance solutions.

siqurity in hazardous areas

Switches

Siquira's C-series switches are designed to form the backbone of your video surveillance network, even in unconditioned, harsh environments. Meeting the toughest requirements, C-series switches are ready to bring in your valuable data 24 hours a day, 7 days a week.

They work without internal fans and do not require special heating or cooling equipment.

The absence of moving parts has the added benefit of lower maintenance costs

NETWORK



DIVA

Security isn't just a matter of buying the right hardware. It is about using that hardware to its full potential. But how to make the most of what you have? DIVA is an advanced video management system (VMS) that consolidates your surveillance equipment into a single seamless solution, giving you the tools you need to act quickly and efficiently.

Continuously analysing camera images for unusual occurrences, it alerts you within seconds of the type of incident and its location. DIVA's video content analysis (VCA) capabilities range from perimeter intrusion detection to face, object and license plate recognition.

However, DIVA does much more than just sending out alerts. Its powerful macro engine automatically initiates a sequence of predefined actions whenever a critical event is detected. Incidents can trigger a camera zoom, set off a recording or cause a surveillance stream to be maximised to full screen. This way, DIVA lets you focus on what matters most. So you get it right. Every single time.

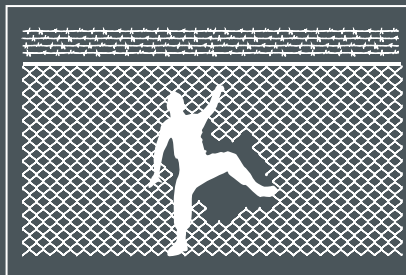
Video encoders

By connecting your analogue surveillance cameras to a video encoder (also commonly known as a video server or codec) they become an integral part of your IP infrastructure. Once an analogue camera has reached the end of its service life, you can easily have it replaced by an IP camera or, if you prefer, a new analogue camera.

Siquira's C-series encoders are cut out for MOG locations. These environmentally hardened devices are fitted with clever technology that detects video presence and monitors image quality and field of view. Notifications are sent as soon as the camera image degrades, the lens becomes too dirty or the camera's position has been tampered with. The benefits are clear: knowing what is going on in your video network results in a significant drop in scheduled and reactive maintenance time.

Perimeter intrusion detection (PID)

Looking for an easy and affordable way to detect intruders? Siquira's C620 E-PID video encoder and BC620WDR-PID and BC840-PID cameras implement perimeter intrusion detection (PID) right at the edge of your network. This powerful piece of analytics alerts you whenever an object crosses a detection line or enters a detection zone. It is optimised for intrusion detection in sterile zones, which means you don't have to invest in expensive additional hardware, such as pressure plates or microwave/infrared installations.



More solutions from the TKH Group

Our sister companies in the TKH Group offer a wide variety of solutions for the MOG industry. Here is a small selection.

BB LEDlightpipe ATEX by BB-Lightconcepts

The BB LEDlightpipe ATEX is a low-energy standard-sized LED pipe that replaces traditional light pipes in hazardous environments.

iProtect Access Control by Keyprocessor

iProtect Access Control provides extensive possibilities for access control in hazardous environments. ATEX-approved HyperX readers placed at muster stations help determine whether everyone is present in case of an emergency.

BFOU and RFOU offshore cables by TKF

The BFOU and RFOU offshore cables produced by TKF ensure the proper functioning of vital equipment under the most extreme circumstances, enabling a safe evacuation and controlled shutdown of production facilities.

FlinQ by Flexposure

FlinQ integrates all devices for access control, video surveillance, intercom and intrusion detection, and allows you to control them through a single intuitive interface.

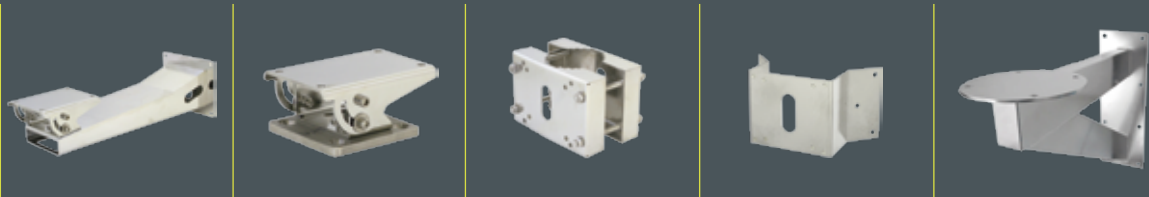


SYSTRONICS CO., LTD.

SIQURA [®]

SURVEILLANCE SOLUTIONS

Accessories securing your world



	Mounting options				
	Fixed camera station				PTZ camera station
Model	EX-WALL F	EX-POLETOP F	EX-POLE F	EX-CORNER F	EX-WALL P
Description	Wall mount with swivel	Pole top mount	Pole clamp adapter	Corner mount	Wall mount
Only in combination with	-	-	EX-WALL F	EX-WALL F	-
Material	316 L stainless steel, electro-polished	316 L stainless steel, electro-polished	316 L stainless steel, electro-polished	316 L stainless steel, electro-polished	316 L stainless steel, electro-polished
Weight	2.5 kg (5.5 lbs)	1.1 kg (2.4 lbs)	4.2 kg (9.3 lbs)	2.5 kg (5.5 lbs)	14 kg (30.9 lbs)
Load rating	50 kg (110 lbs)	50 kg (110 lbs)	55 kg (121 lbs)	55 kg (121 lbs)	65 kg (143 lbs)

	Mounting options			Miscellaneous		
	PTZ dome			Washer tank	Termination box	Connection box
Model	WMEX-01	PMEX-01	CMEX-01	EX-TANK10L	EX-TERMBX190	EX-CONNBOX566
Description	Wall mount	Pole clamp adapter	Ceiling mount	External washer tank with Ex d solenoid valve	Termination enclosure to contain non-powered devices	Connection box to contain powered devices
Only in combination with	-	WMEX-01	-	-	-	-
Material	316 stainless steel	316 stainless steel	316 stainless steel	-	316 L stainless steel	Copper free aluminium alloy
Weight	3 kg (6.6 lbs)	7 kg (15.4 lbs)	9 kg (19.8 lbs)	25 kg (55.1 lbs) - full	-	-
Load rating	25 kg (55.1 lbs)	35 kg (77.2 lbs)	25 kg (55.1 lbs)	-	-	-
Ex rating	-	-	-	Ex m	Ex e	Ex d
Height	-	-	-	Up to 20 meter	-	-
Ingress protection rating	-	-	-	IP65	IP66	IP66
Solenoid voltage	-	-	-	24 Vac/Vdc or 115/230 Vac	-	-
Power consumption	-	-	-	10 W	-	-
Capacity	-	-	-	10 l	-	-
Dimensions	-	-	-	652 x 432 x 262 mm (25.7 x 17.0 x 10.3")	190 x 190 x 100 mm (7.5 x 7.5 x 3.9")	566 x 366 x 269 mm (22.3 x 14.4 x 10.6")

Improve performance and reduce risk within your supply chain

Siqura is fully registered as a supplier on the Achilles First Point Assessment Database (FPAL) for suppliers to the oil and gas industry for the provision of products and services.



Achilles FPAL publishes and monitors the accuracy of information provided in a supplier's record in areas such as products and services, Financial performance and HSE policy. The Achilles FPAL Quality Checking process evaluates supplier profiles and ensures that they include current and valid information for buyers which saves time, resource and cost for all parties involved.



Authorized Distributor **SYSTRONICS Co.,Ltd.**

ตัวแทนจำหน่ายในประเทศไทย บริษัท ซีสตรอนิกส์ จำกัด

Bangkok Office : 0-2879-1127 to 9

Rayong Office : 0-3869-4145 to 8

E-mail : info@systronics.co.th

Siqura is part of TKH Security Solutions, a division of the TKH Group. TKH Security Solutions offers a wide range of systems or access control, surveillance, intrusion detection and video management.

